

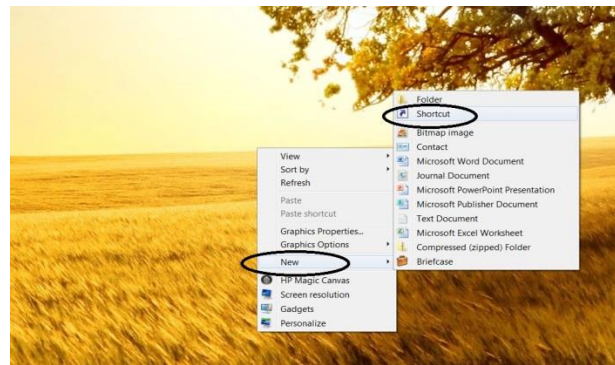
# DIAGNOSTIC IMAGING NORTHWEST

An Alliance of Medical Imaging Northwest & MultiCare Good Samaritan Hospital

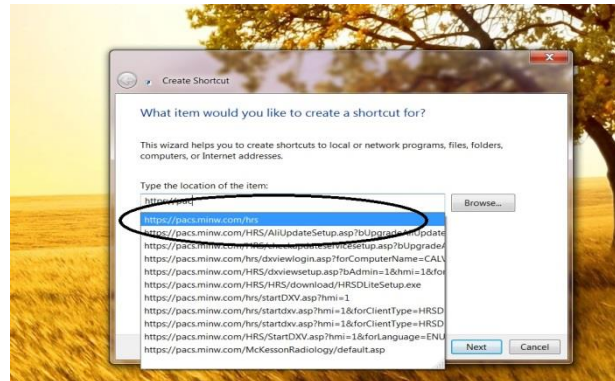
## McKesson Radiology Station Lite

### Installing a desktop icon

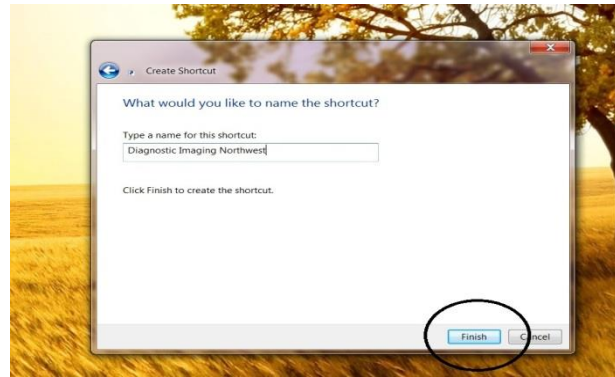
1. Right click in open space on your desktop.
2. Select "New"
3. Select "Shortcut"



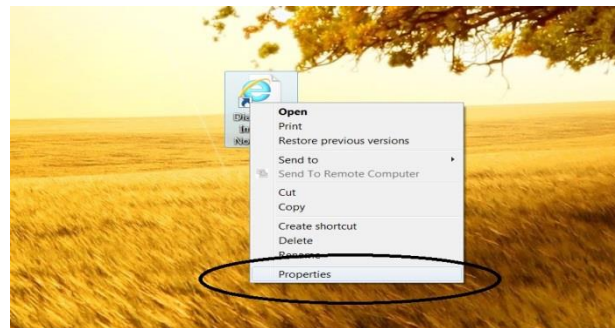
4. Type in: <https://pacs/minw...>
5. The address will appear below.
6. Select the address
7. Select "Next"



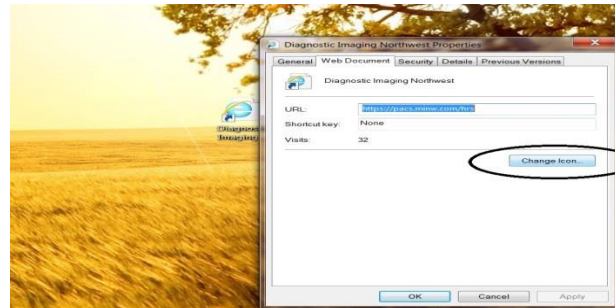
8. Type in name of file  
"Diagnostic Imaging Northwest"
9. Select "Finish"



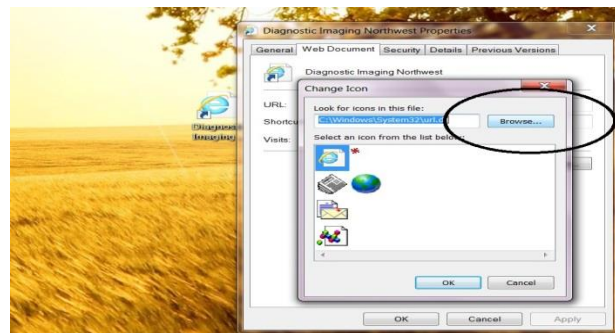
10. The icon will appear on your desk top.  
**To change picture - continue.**
11. Right click over icon
12. Select "Properties"



1. Select "Change Icon"

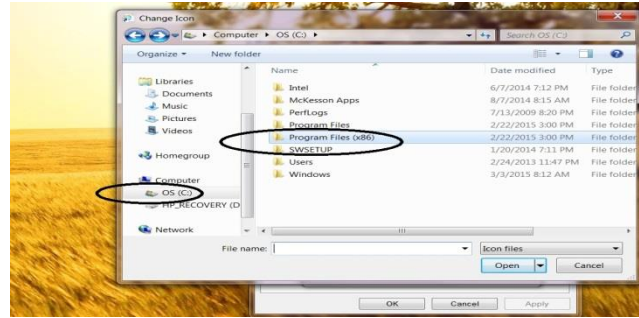


2. Browse your work station for the C drive

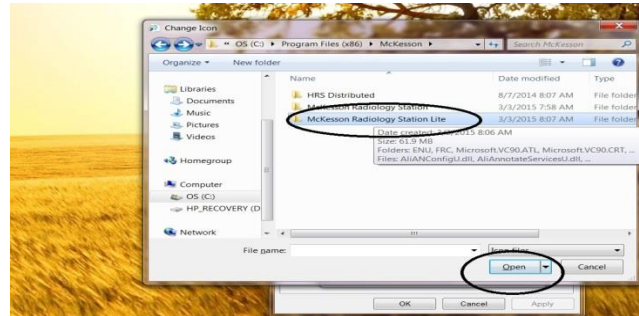


3. Locate and select “Program Files”

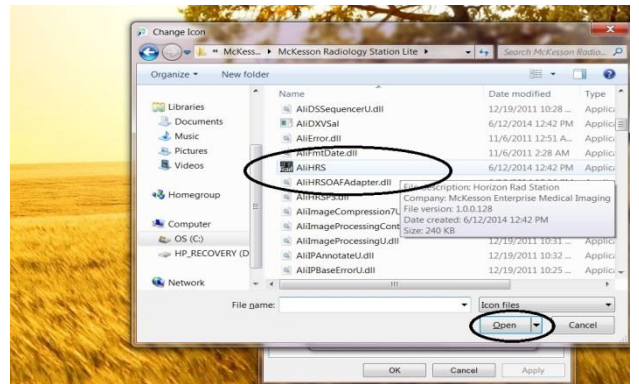
4. Note: You may have multiple Program Files folders.



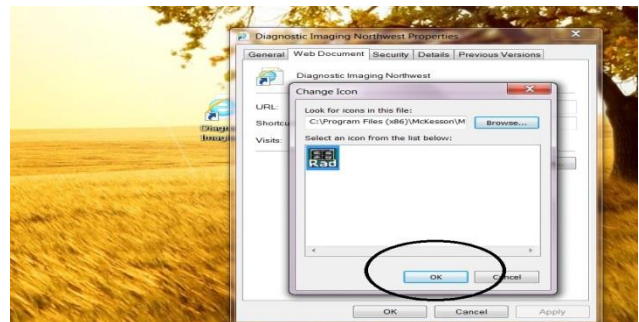
5. Locate “Mckesson Radiology Station Light” folder and select “Open”



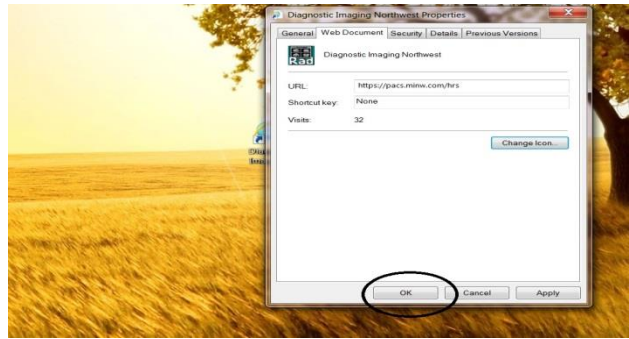
6. Locate the AliHRS file.  
7. Select “Open”



1. Select “OK”



2. Select "OK"
3. Note: Do **not** select "Change Icon" at this point.



4. You are finished. Congratulations.



5. Double clicking on the icon will open the log in window.

